

# the Avalon

1193 Square feet

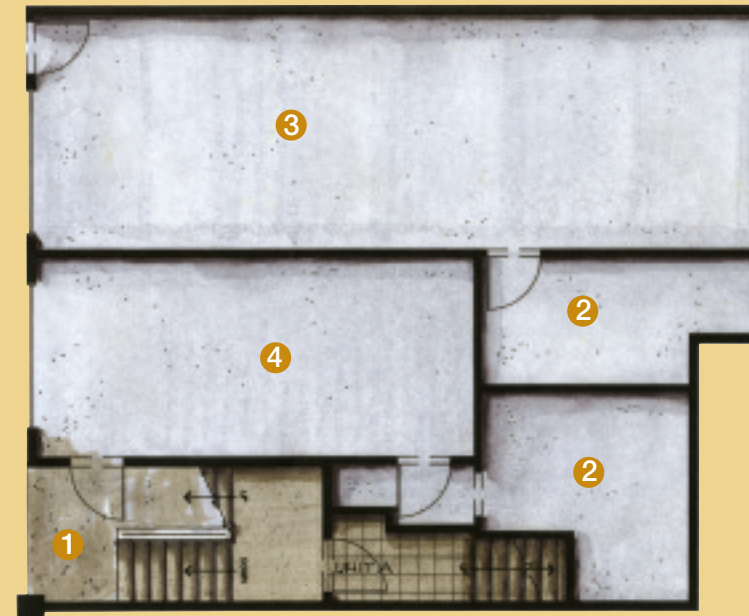


This plan is for marketing purposes only, and is subject to change. All images are artist's renditions only.

- 1 Gourmet kitchen with gas range and large granite entertaining island.
- 2 Spacious living area with built-in library.
- 3 Media room, which could option as a private dining room or guest room.
- 4 Private terrace with views into the forest.
- 5 Master suite with steam shower and built-in library.
- 6 Warm textured materials, in-floor heating and state of the art European fixturing.



## TYPICAL GARAGE LEVEL



This plan is for marketing purposes only, and is subject to change. All images are artist's renditions only.

- 1 Covered Entry
- 2 Large in-house storage
- 3 Tandem Garage – Chateau One & Three
- 4 Single Garage – Chateau Two

